

**RECTIFIER DIODES MODULE**

**ADD605**

Repetitive voltage up to **3600 V**  
Mean forward current **691 A**  
Surge current **15 kA**

**FINAL SPECIFICATION**

Apr. 17 - Issue: 1

Symbol	Characteristic	Conditions	T <sub>j</sub> [°C]	Value	Unit
<b>BLOCKING</b>					
V <sub>RRM</sub>	Repetitive peak reverse voltage		150	3600	V
V <sub>RSM</sub>	Non-repetitive peak reverse voltage		150	3700	V
I <sub>RRM</sub>	Repetitive peak reverse current	V=VRRM	150	100	mA
<b>CONDUCTING</b>					
I <sub>F(AV)</sub>	Mean forward current	180° sin, 50 Hz, T <sub>c</sub> =100°C, single side cooled		568	A
I <sub>F(AV)</sub>	Mean forward current	180° sin, 50 Hz, T <sub>c</sub> =85°C, single side cooled		691	A
I <sub>FSM</sub>	Surge forward current	Sine wave, 10 ms without reverse voltage	150	15	kA
I <sup>2</sup> t	I <sup>2</sup> t			1125 x 10 <sup>3</sup>	A <sup>2</sup> s
V <sub>FM</sub>	Forward voltage		150	0,85	V
V <sub>F(TO)</sub>	Threshold voltage		150	0,85	V
r <sub>F</sub>	Forward slope resistance		150	0,290	mohm
<b>SWITCHING</b>					
t <sub>rr</sub>	Reverse recovery time		150		μs
Q <sub>rr</sub>	Reverse recovery charge				μC
I <sub>rr</sub>	Peak reverse recovery current				A
<b>MOUNTING</b>					
R <sub>th(j-c)</sub>	Thermal impedance, DC	Junction to case, per element		70,0	°C/kW
R <sub>th(c-h)</sub>	Thermal impedance	Case to heatsink, per element		20,0	°C/kW
T <sub>j</sub>	Operating junction temperature			-30 / 150	°C
V <sub>ins</sub>	RMS insulation voltage	50Hz, 1min, circuit to base,all terminal shorted	25	3000	V
T	Mounting torque	Case to heatsink		4 to 6	Nm
		Busbars to terminals		9 to 11	Nm
	Mass			1500	g

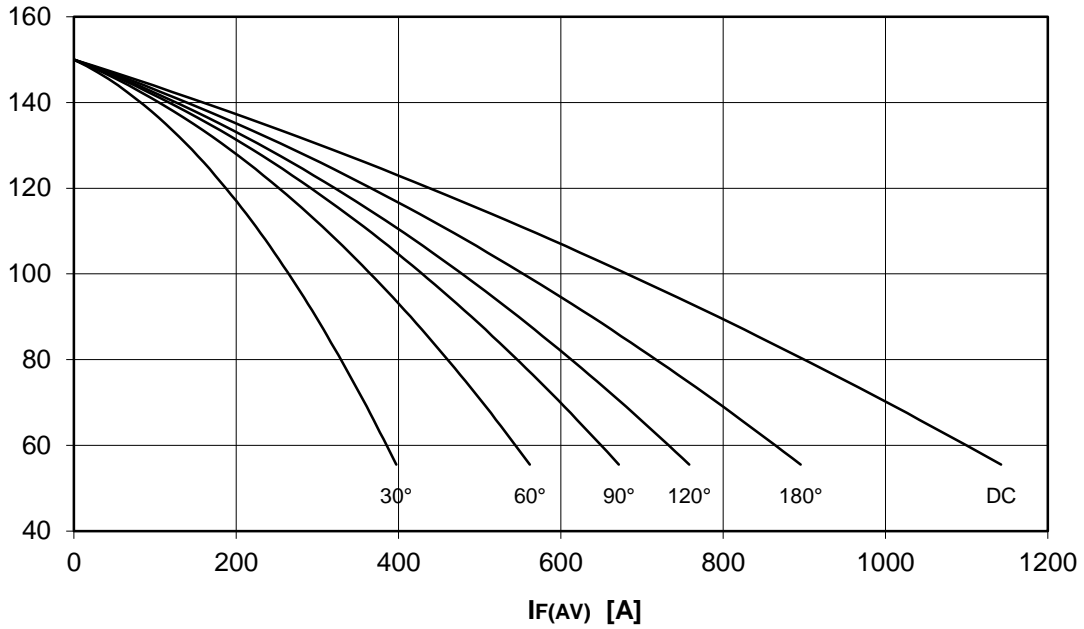
**ORDERING INFORMATION : ADD605 S 36**

standard specification   VRRM/100

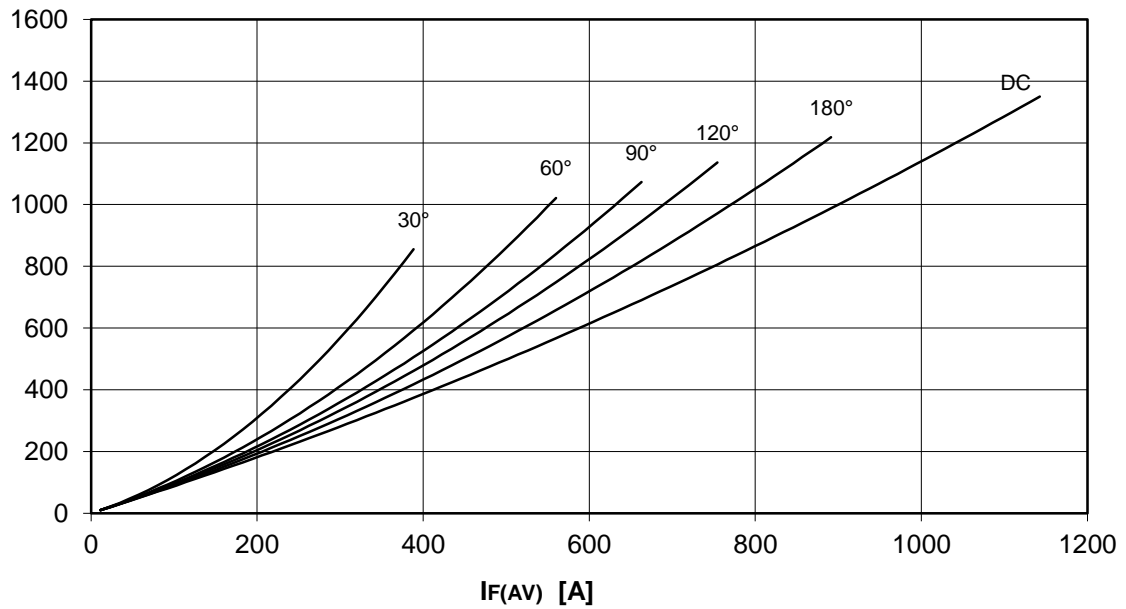
DISSIPATION CHARACTERISTICS

SQUARE WAVE

$T_c$  [°C]

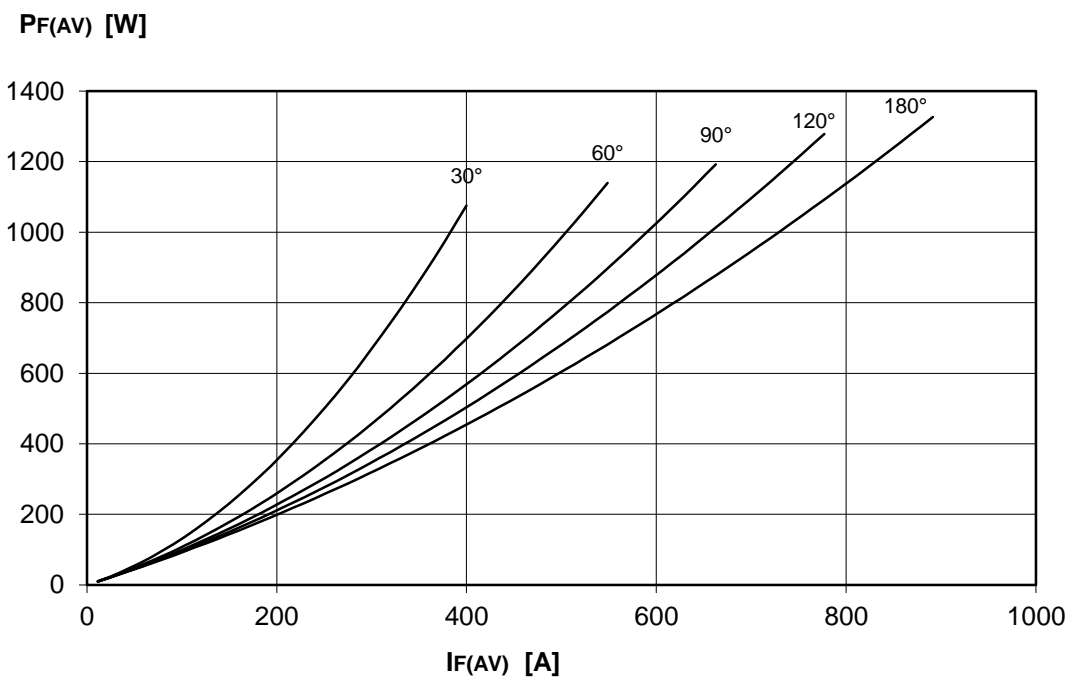
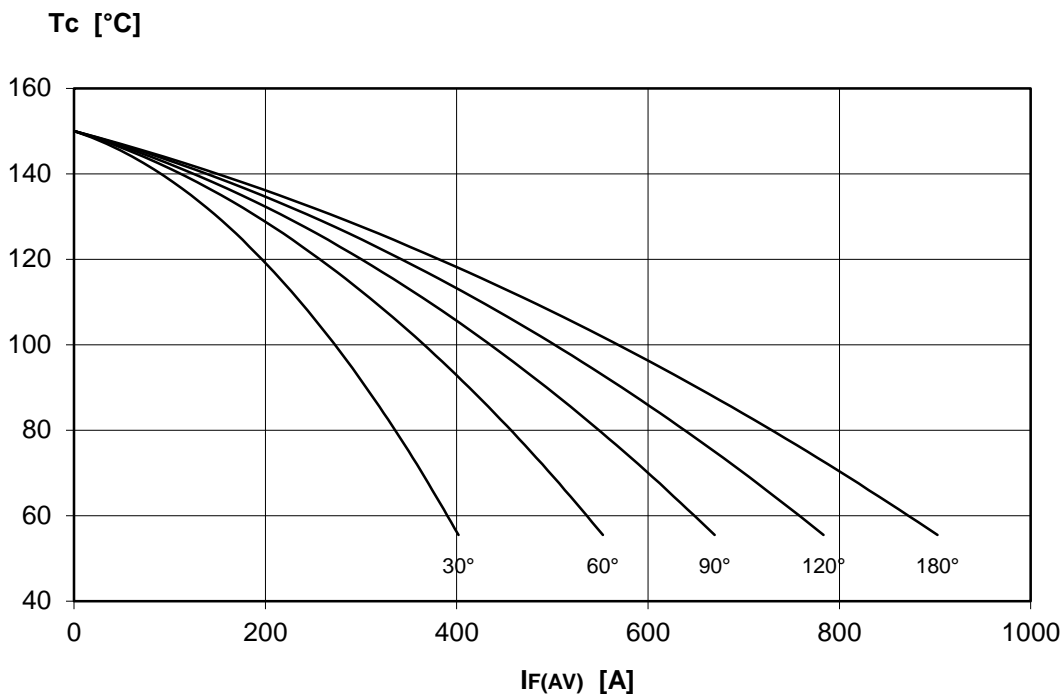


$P_F(AV)$  [W]



**DISSIPATION CHARACTERISTICS**

SINE WAVE

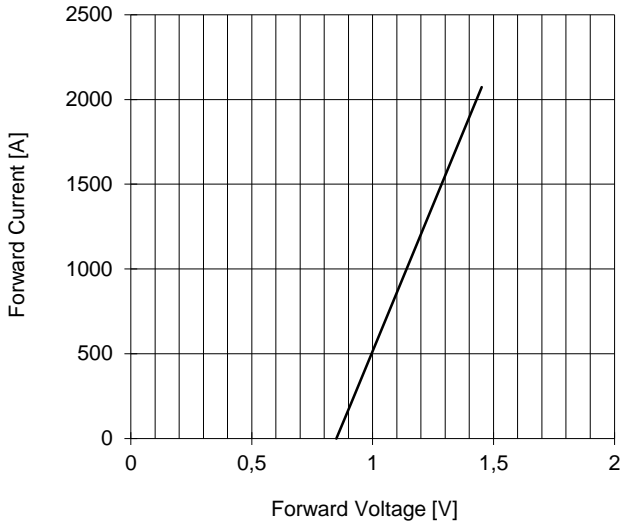


# ADD605 RECTIFIER DIODES MODULE

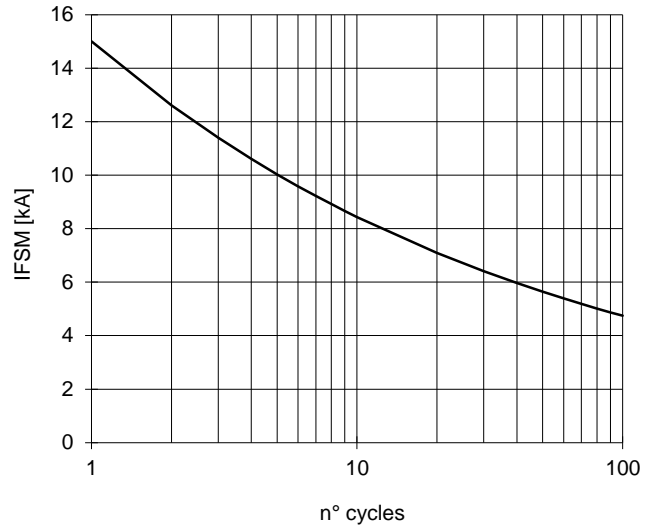


FINAL SPECIFICATION Apr. 17 - Issue: 1

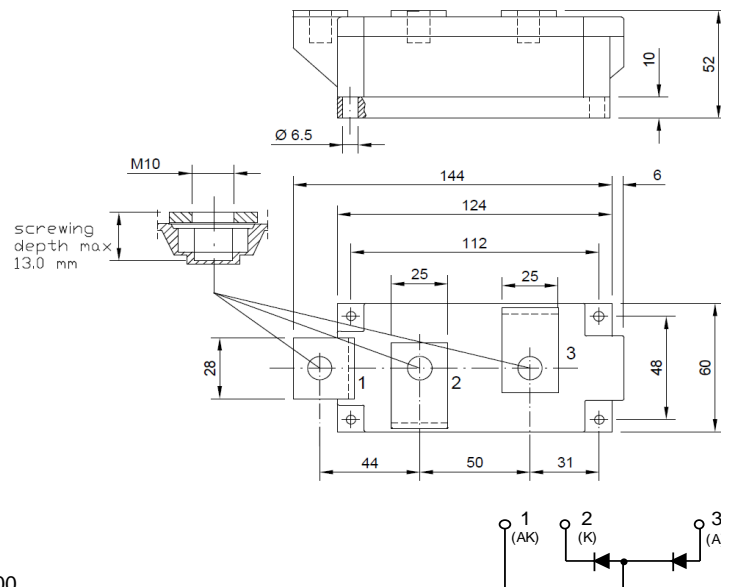
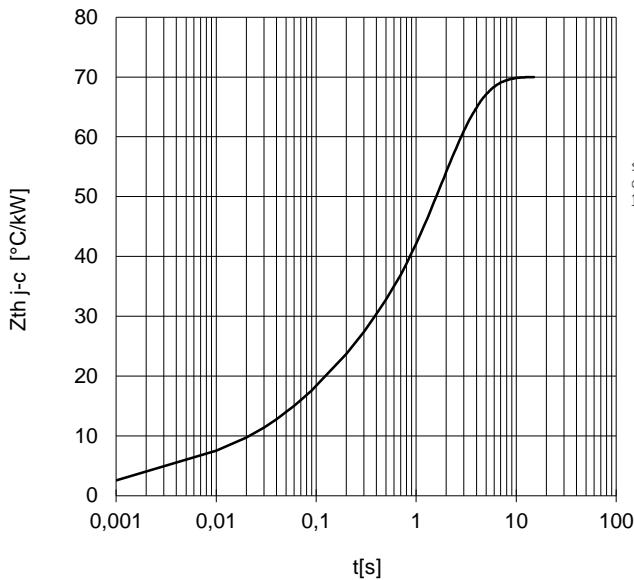
FORWARD CHARACTERISTIC  
T<sub>j</sub> = 150 °C



SURGE CHARACTERISTIC  
T<sub>j</sub> = 150 °C



TRANSIENT THERMAL IMPEDANCE



Distributed by

All the characteristics given in this data sheet are guaranteed only with uniform clamping force, cleaned and lubricated heatsink, surfaces with flatness < .03 mm and roughness < 2 µm.  
In the interest of product improvement POSEICO SpA reserves the right to change any data given in this data sheet at any time without previous notice.  
If not stated otherwise the maximum value of ratings (symbols over shaded background) and characteristics is reported.

