

RECTIFIER DIODES MODULE

ADD705

Repetitive voltage up to **2600 V**
Mean forward current **718 A**
Surge current **20 kA**

FINAL SPECIFICATION

May 18 - Issue: 2

Symbol	Characteristic	Conditions	T _j [°C]	Value	Unit
BLOCKING					
V _{RRM}	Repetitive peak reverse voltage		150	2600	V
V _{RSM}	Non-repetitive peak reverse voltage		150	2700	V
I _{RRM}	Repetitive peak reverse current	V=VRRM	150	25	mA
CONDUCTING					
I _{F(AV)}	Mean forward current	180° sin, 50 Hz, T _c =100°C, single side cooled		589	A
I _{F(AV)}	Mean forward current	180° sin, 50 Hz, T _c =85°C, single side cooled		718	A
I _{FSM}	Surge forward current	Sine wave, 10 ms without reverse voltage	150	20	kA
I ² t	I ² t			2000 x 10 ³	A ² s
V _{FM}	Forward voltage	Forward current = 1600 A	25	1,35	V
V _{F(TO)}	Threshold voltage		150	0,85	V
r _F	Forward slope resistance		150	0,250	mohm
SWITCHING					
t _{rr}	Reverse recovery time		150		μs
Q _{rr}	Reverse recovery charge			2000	μC
I _{rr}	Peak reverse recovery current				A
MOUNTING					
R _{th(j-c)}	Thermal impedance, DC	Junction to case, per element		70,0	°C/kW
R _{th(c-h)}	Thermal impedance	Case to heatsink, per element		20,0	°C/kW
T _j	Operating junction temperature			-30 / 150	°C
V _{ins}	RMS insulation voltage	50Hz, 1min, circuit to base,all terminal shorted	25	3000	V
T	Mounting torque	Case to heatsink		4 to 6	Nm
		Busbars to terminals		9 to 11	Nm
	Mass			1500	g

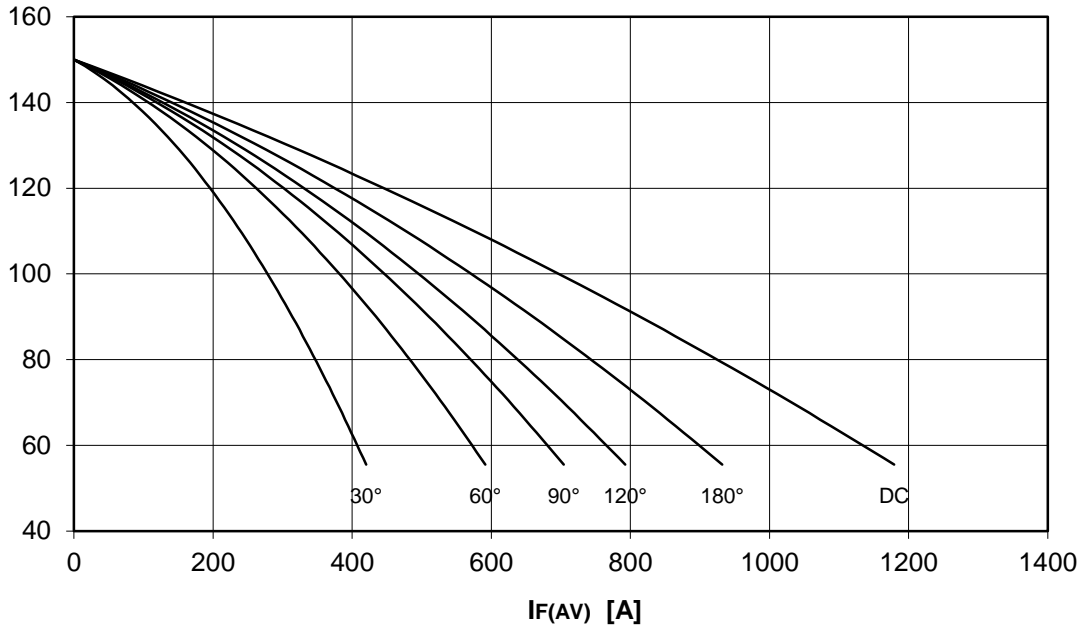
ORDERING INFORMATION : ADD705 S 26

standard specification VRRM/100

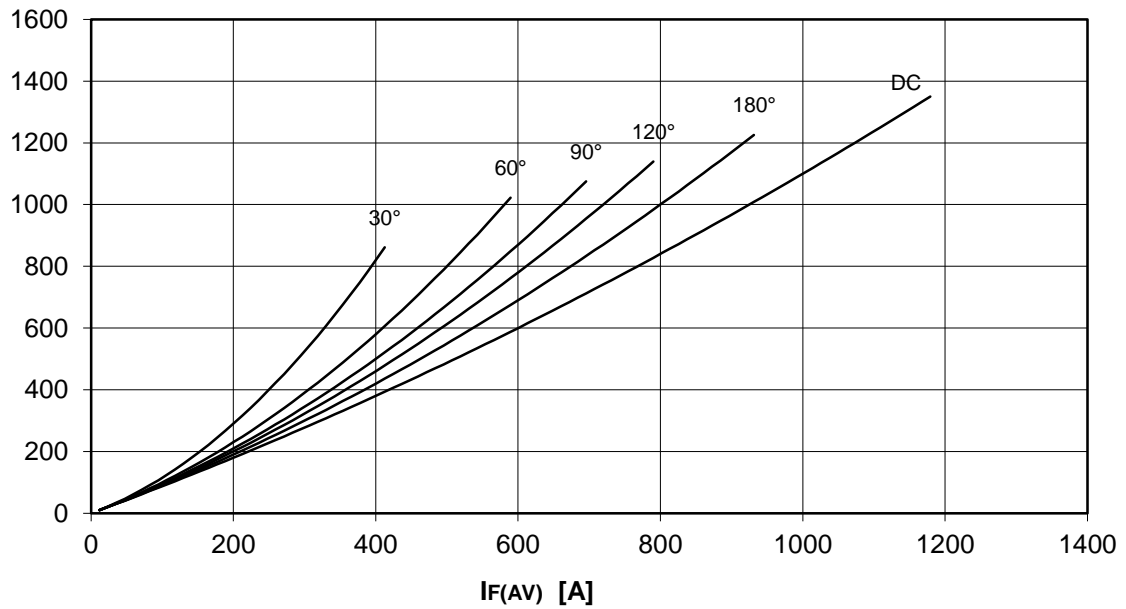
DISSIPATION CHARACTERISTICS

SQUARE WAVE

T_c [°C]

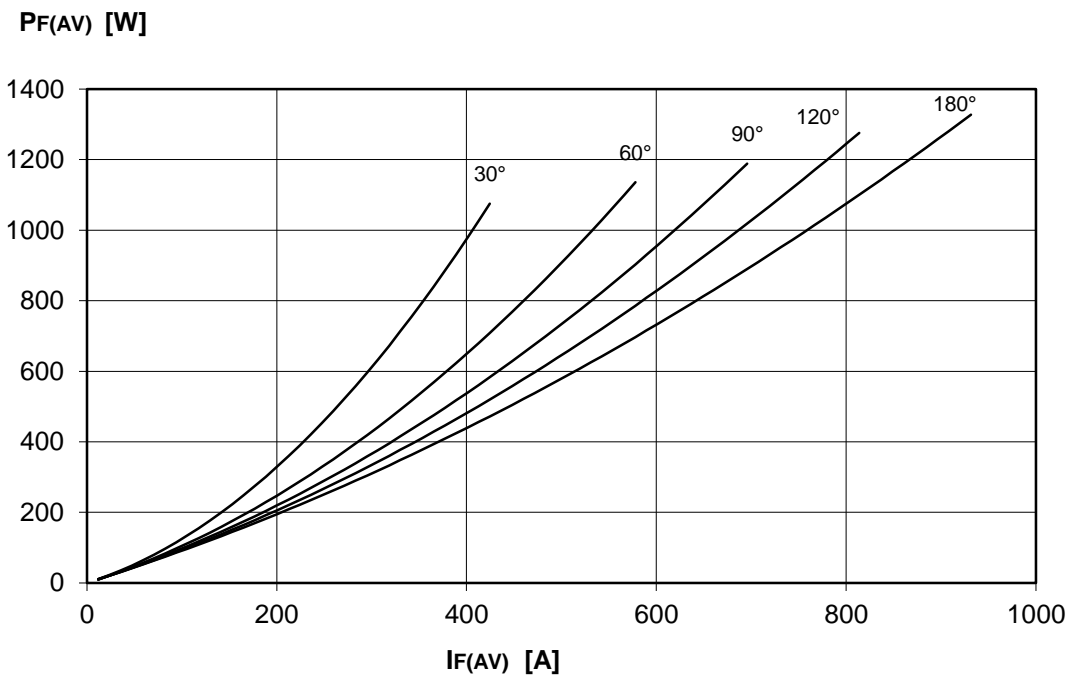
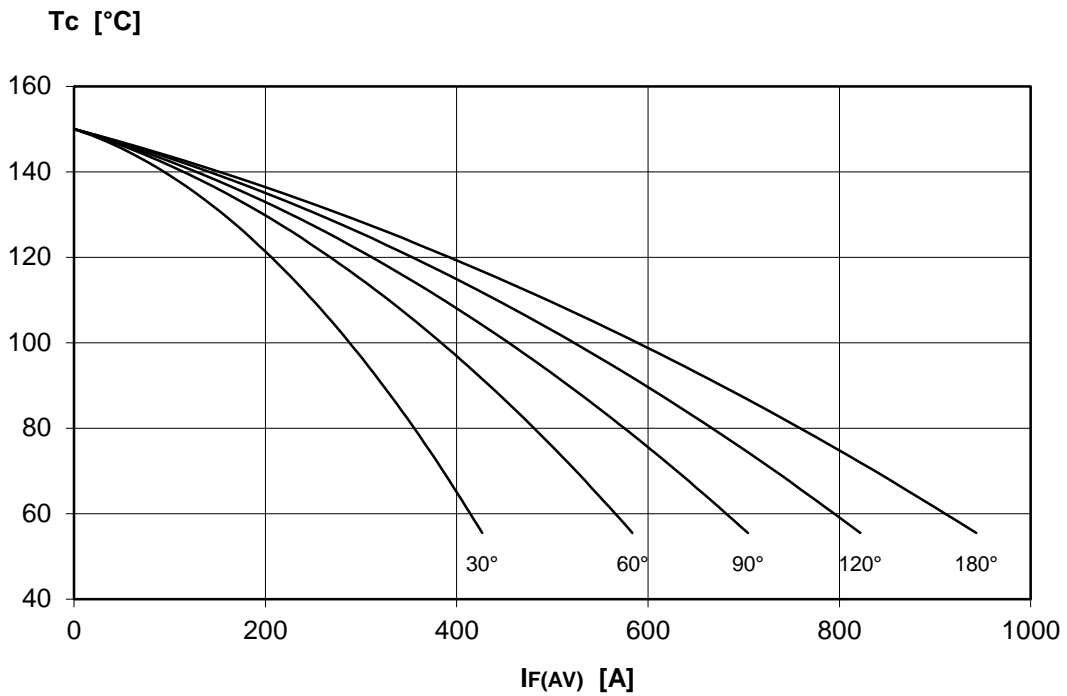


P_{F(AV)} [W]

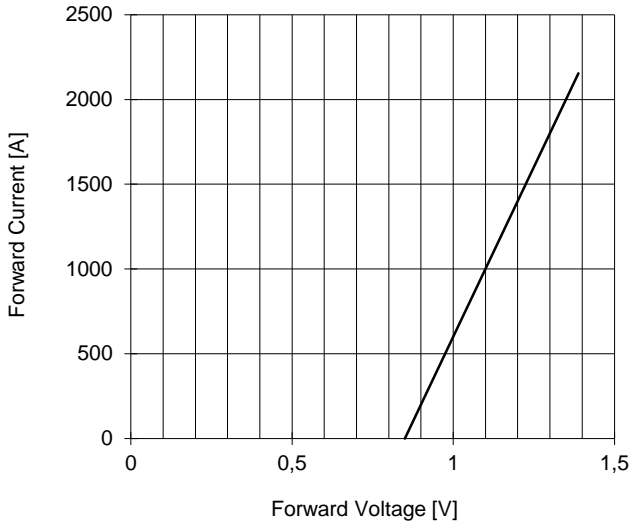


DISSIPATION CHARACTERISTICS

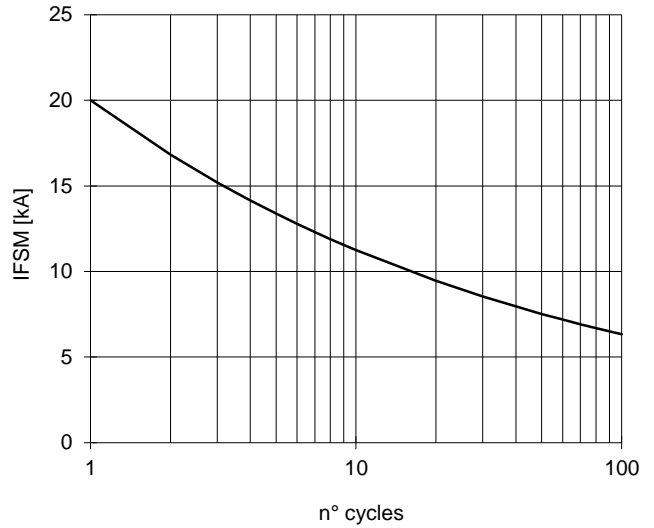
SINE WAVE



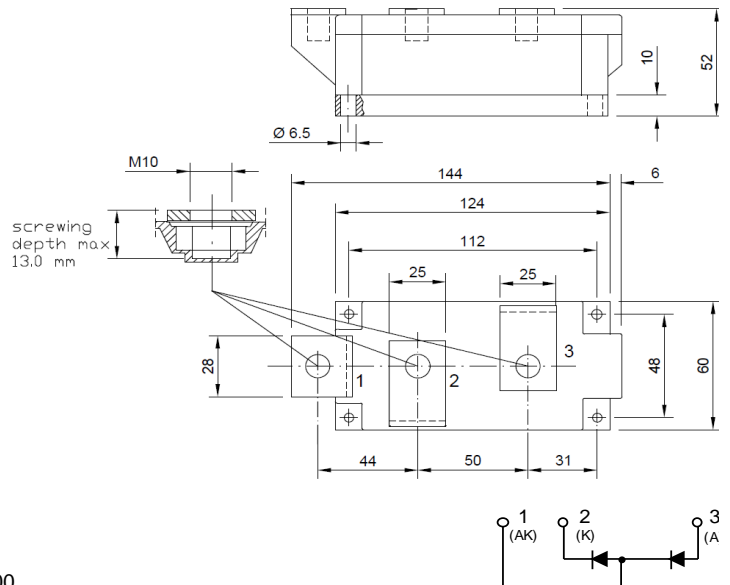
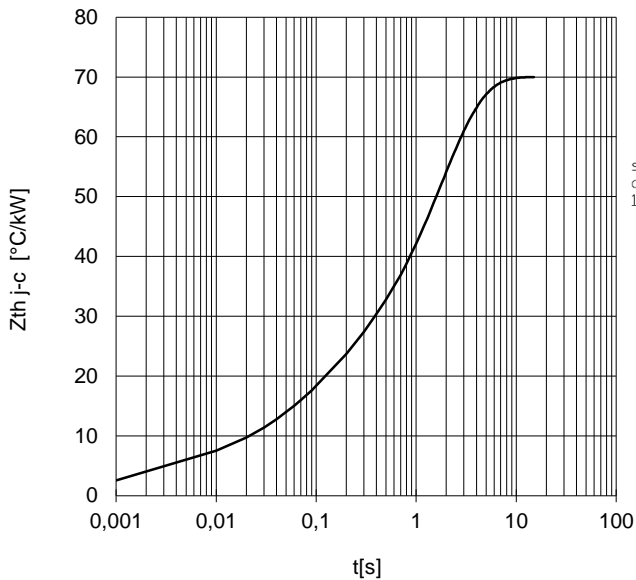
FORWARD CHARACTERISTIC
T_j = 150 °C



SURGE CHARACTERISTIC
T_j = 150 °C



TRANSIENT THERMAL IMPEDANCE



All the characteristics given in this data sheet are guaranteed only with uniform clamping force, cleaned and lubricated heatsink, surfaces with flatness < .03 mm and roughness < 2 μm.
In the interest of product improvement POSEICO SpA reserves the right to change any data given in this data sheet at any time without previous notice.
If not stated otherwise the maximum value of ratings (symbols over shaded background) and characteristics is reported.

Distributed by

