

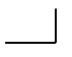
RECTIFIER DIODE

AR372

Repetitive voltage up to	3200 V
Mean forward current	721 A
Surge current	5,6 kA

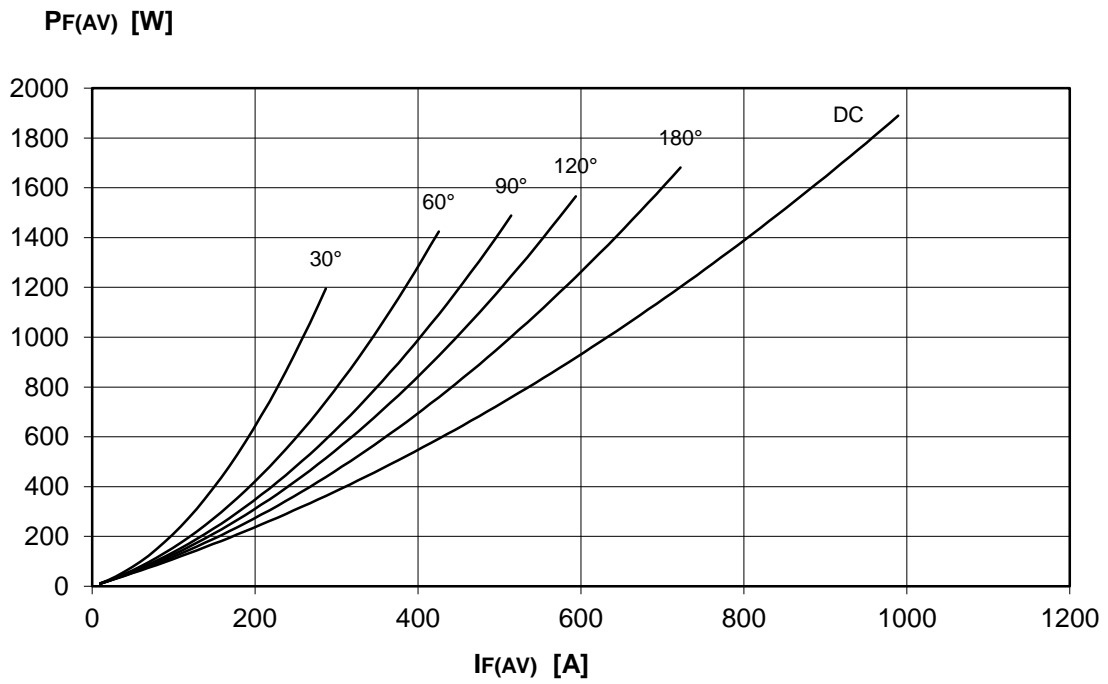
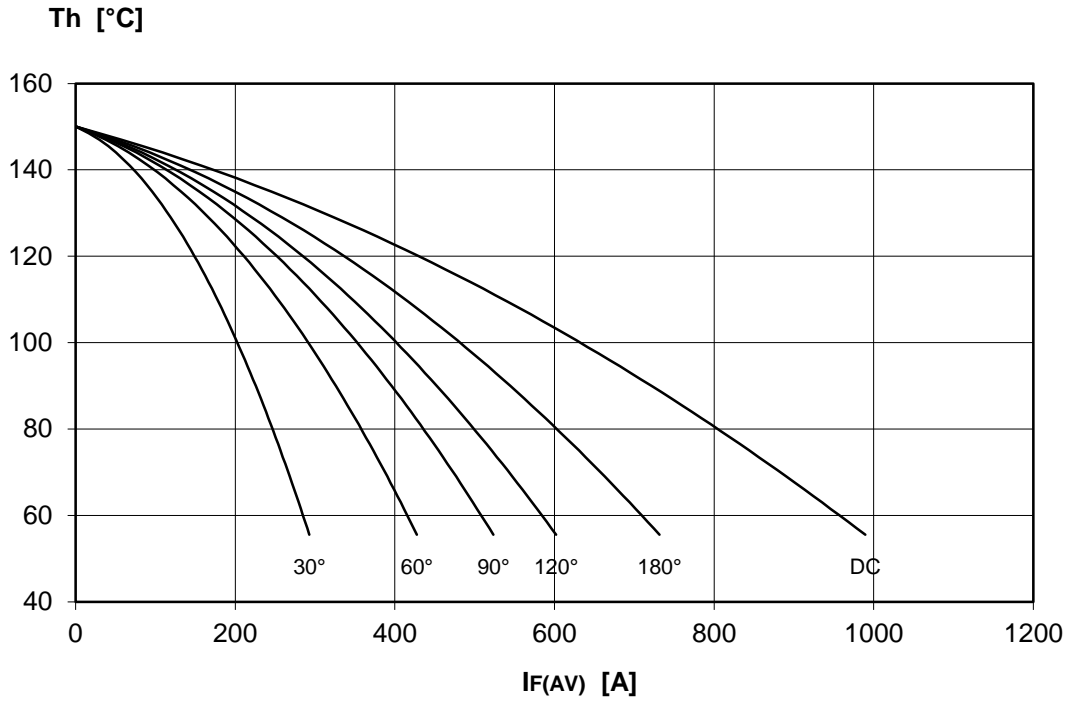
FINAL SPECIFICATION

Mar. 17 - Issue: 1

Symbol	Characteristic	Conditions	T _j [°C]	Value	Unit
BLOCKING					
V _{RRM}	Repetitive peak reverse voltage		150	3200	V
V _{RSM}	Non-repetitive peak reverse voltage		150	3300	V
I _{RRM}	Repetitive peak reverse current	V=VRRM	150	50	mA
CONDUCTING					
I _{F(AV)}	Mean forward current	180° sin, 50 Hz, Th=55°C, double side cooled		721	A
I _{F(AV)}	Mean forward current	180° sin, 50 Hz, Tc=85°C, double side cooled		711	A
I _{FSM}	Surge forward current	Sine wave, 10 ms without reverse voltage	150	5,6	kA
I ² t	I ² t			157 x 10 ³	A ² s
V _{FM}	Forward voltage	Forward current = 2000 A	25	2,84	V
V _{F(TO)}	Threshold voltage		150	1,00	V
r _F	Forward slope resistance		150	0,920	mohm
SWITCHING					
t _{rr}	Reverse recovery time		150		μs
Q _{rr}	Reverse recovery charge				μC
I _{rr}	Peak reverse recovery current				A
MOUNTING					
R _{th(j-h)}	Thermal impedance, DC	Junction to heatsink, double side cooled		50,0	°C/kW
R _{th(c-h)}	Thermal impedance	Case to heatsink, double side cooled		15,0	°C/kW
T _j	Operating junction temperature			-30 / 150	°C
F	Mounting force			8.0 / 9.0	kN
	Mass			280	g
ORDERING INFORMATION : AR372 S 32 standard specification  VRRM/100					

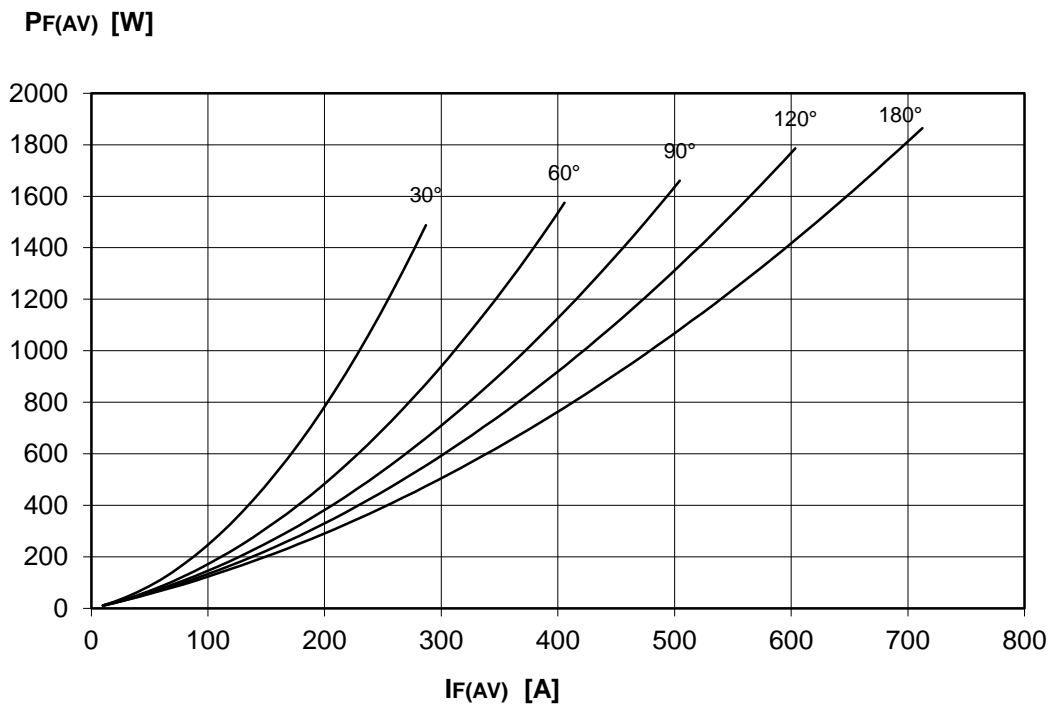
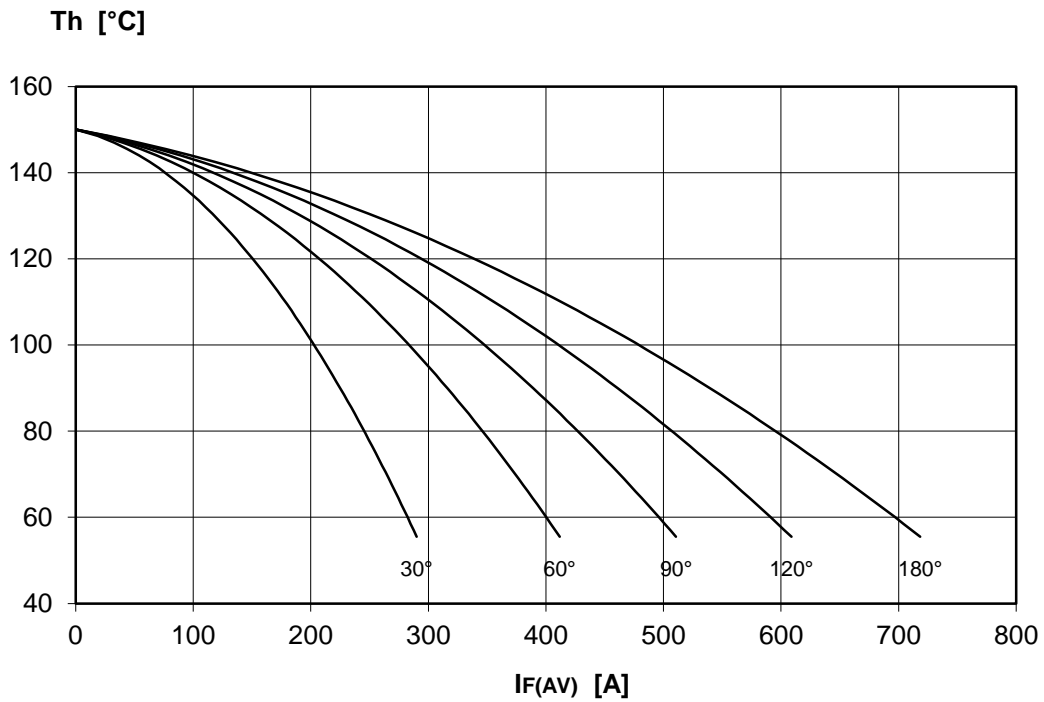
DISSIPATION CHARACTERISTICS

SQUARE WAVE



DISSIPATION CHARACTERISTICS

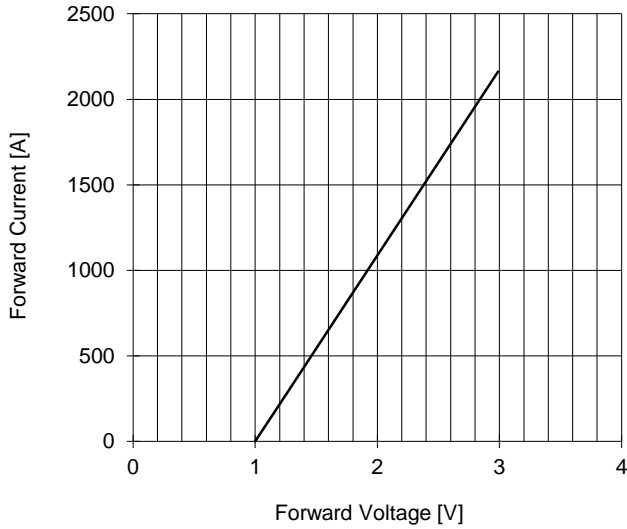
SINE WAVE



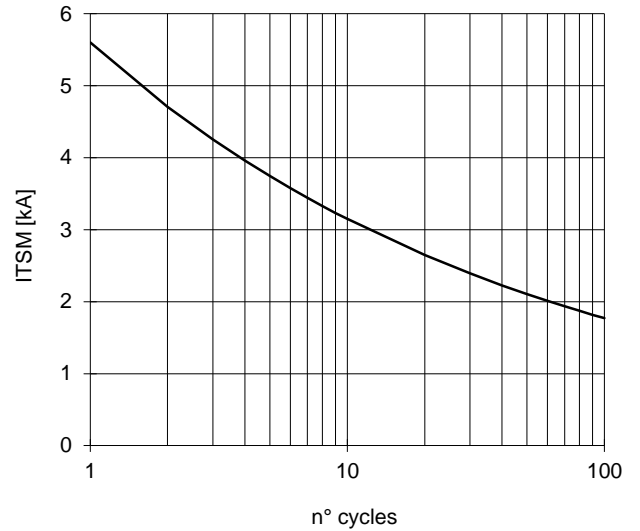
AR372 RECTIFIER DIODE

FINAL SPECIFICATION Mar. 17 - Issue: 1

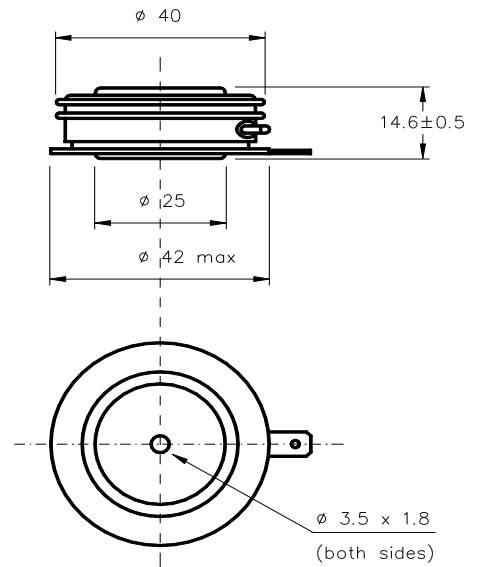
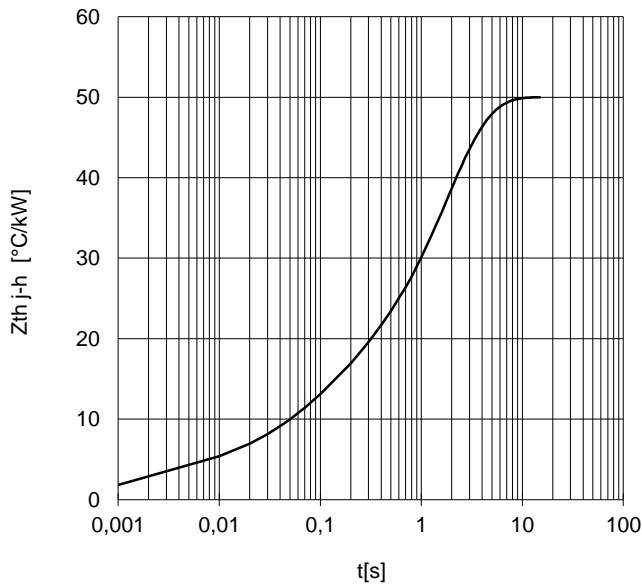
FORWARD CHARACTERISTIC
T_j = 150 °C



SURGE CHARACTERISTIC
T_j = 150 °C



TRANSIENT THERMAL IMPEDANCE
DOUBLE SIDE COOLED



Dimensions
in mm



All the characteristics given in this data sheet are guaranteed only with uniform clamping force, cleaned and lubricated heatsink, surfaces with flatness < .03 mm and roughness < 2 μm .

In the interest of product improvement POSEICO SpA reserves the right to change any data given in this data sheet at any time without previous notice.

If not stated otherwise the maximum value of ratings (symbols over shaded background) and characteristics is reported.

Distributed by

