

RECTIFIER DIODE

AR749LT

Repetitive voltage up to **2500 V**
Mean forward current **5179 A**
Surge current **70 kA**

FINAL SPECIFICATION

Mar. 17 - Issue: 3

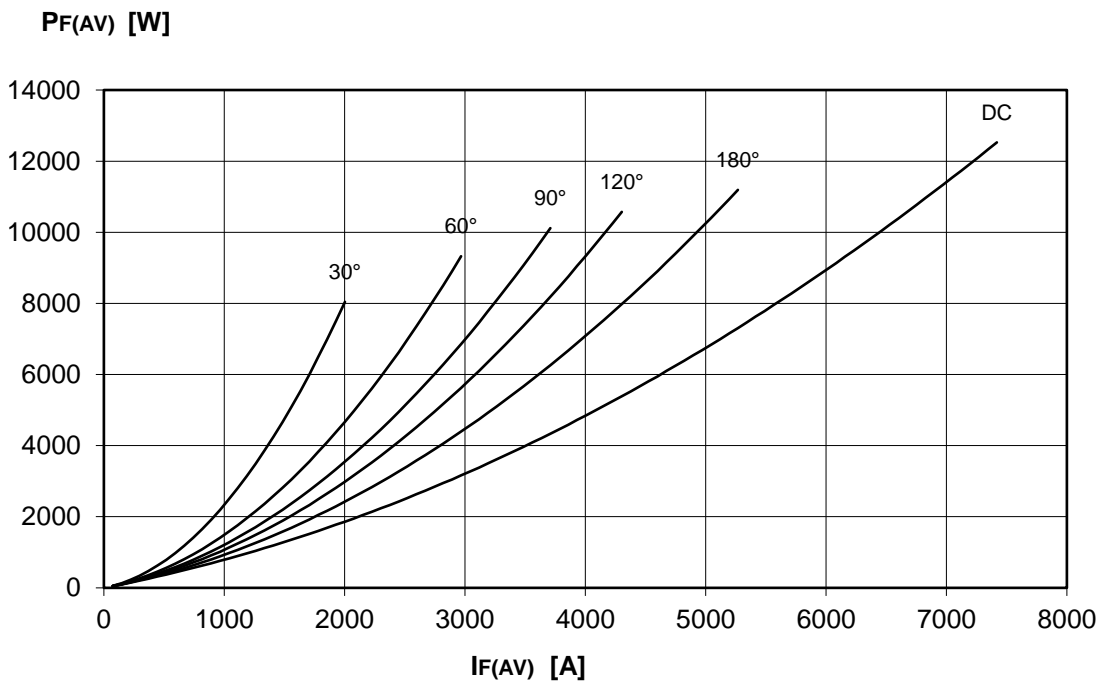
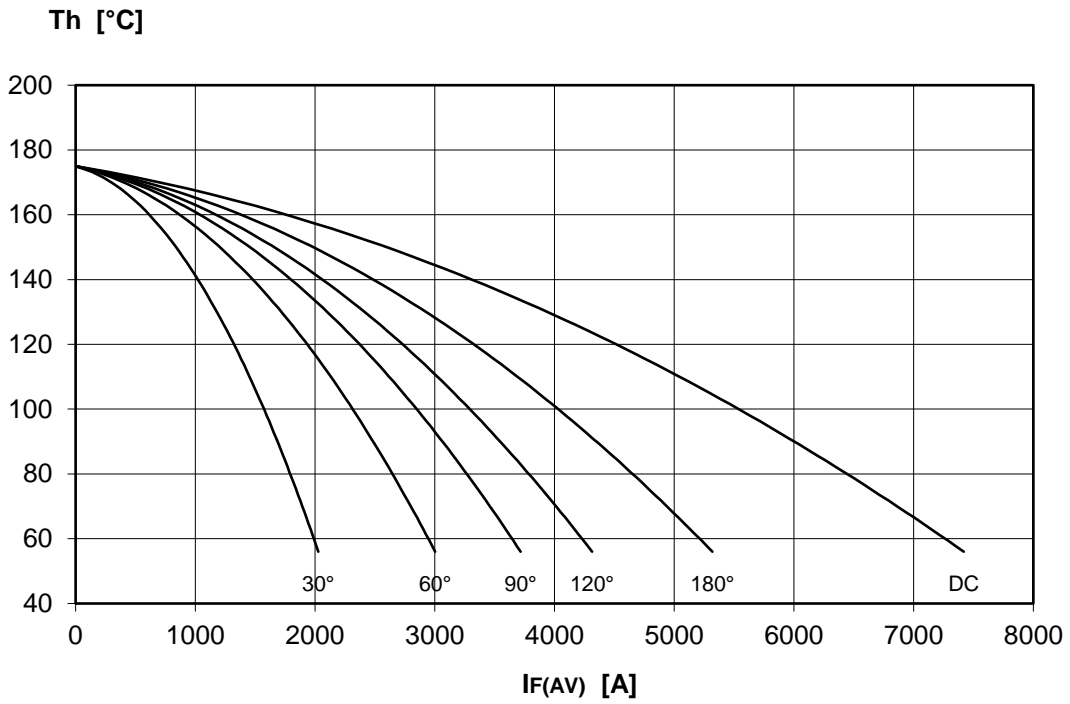
| Symbol | Characteristic | Conditions | T _j [°C] | Value | Unit |
|----------------------|-------------------------------------|--|------------------------|-------------------------|------------------|
| BLOCKING | | | | | |
| V _{RRM} | Repetitive peak reverse voltage | | 175 | 2500 | V |
| V _{RSM} | Non-repetitive peak reverse voltage | | 175 | 2600 | V |
| I _{RRM} | Repetitive peak reverse current | V=VRRM | 175 | 150 | mA |
| CONDUCTING | | | | | |
| I _{F(AV)} | Mean forward current | 180° sin, 50 Hz, Th=55°C, double side cooled | | 5179 | A |
| I _{F(AV)} | Mean forward current | 180° sin, 50 Hz, Tc=85°C, double side cooled | | 5028 | A |
| I _{FSM} | Surge forward current | Sine wave, 10 ms without reverse voltage | 175 | 70 | kA |
| I ² t | I ² t | | | 24500 x 10 ³ | A ² s |
| V _{FM} | Forward voltage | Forward current = 3000 A | 25 | 1,30 | V |
| V _{F(TO)} | Threshold voltage | | 175 | 0,65 | V |
| r _F | Forward slope resistance | | 175 | 0,140 | mohm |
| SWITCHING | | | | | |
| t _{rr} | Reverse recovery time | | 175 | | μs |
| Q _{rr} | Reverse recovery charge | | | | μC |
| I _{rr} | Peak reverse recovery current | | | | A |
| MOUNTING | | | | | |
| R _{th(j-h)} | Thermal impedance, DC | Junction to heatsink, double side cooled | | 9,5 | °C/kW |
| R _{th(c-h)} | Thermal impedance | Case to heatsink, double side cooled | | 2,0 | °C/kW |
| T _j | Operating junction temperature | | | -30 / 175 | °C |
| F | Mounting force | | | 46.0 / 54.0 | kN |
| | Mass | | | 1150 | g |

ORDERING INFORMATION : AR749LT S 25

standard specification VRRM/100

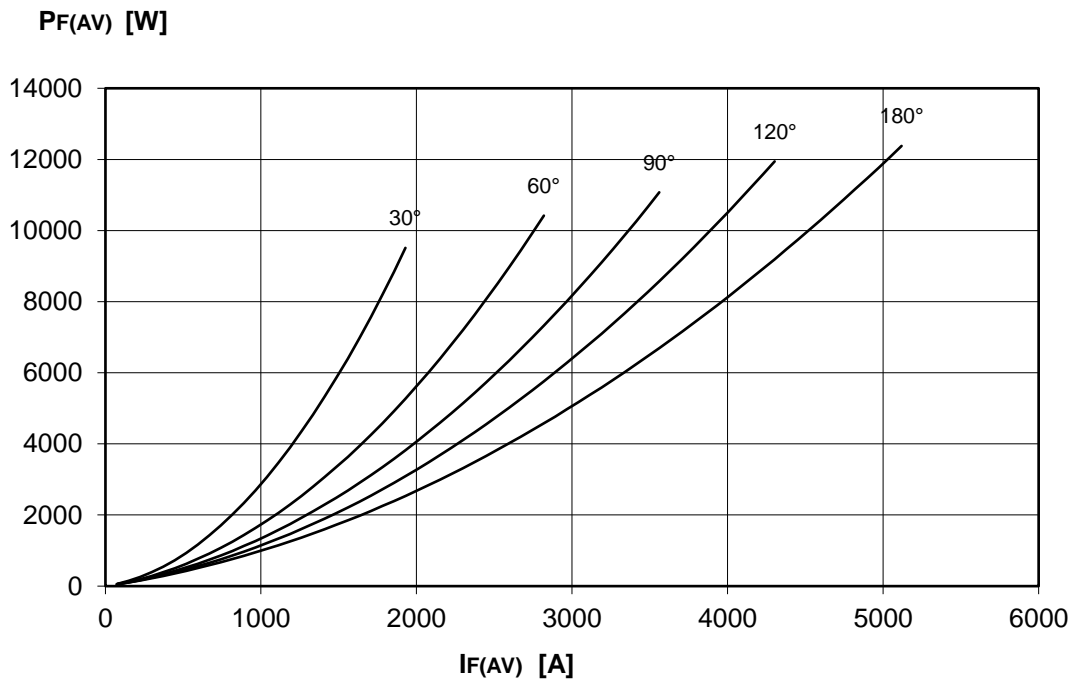
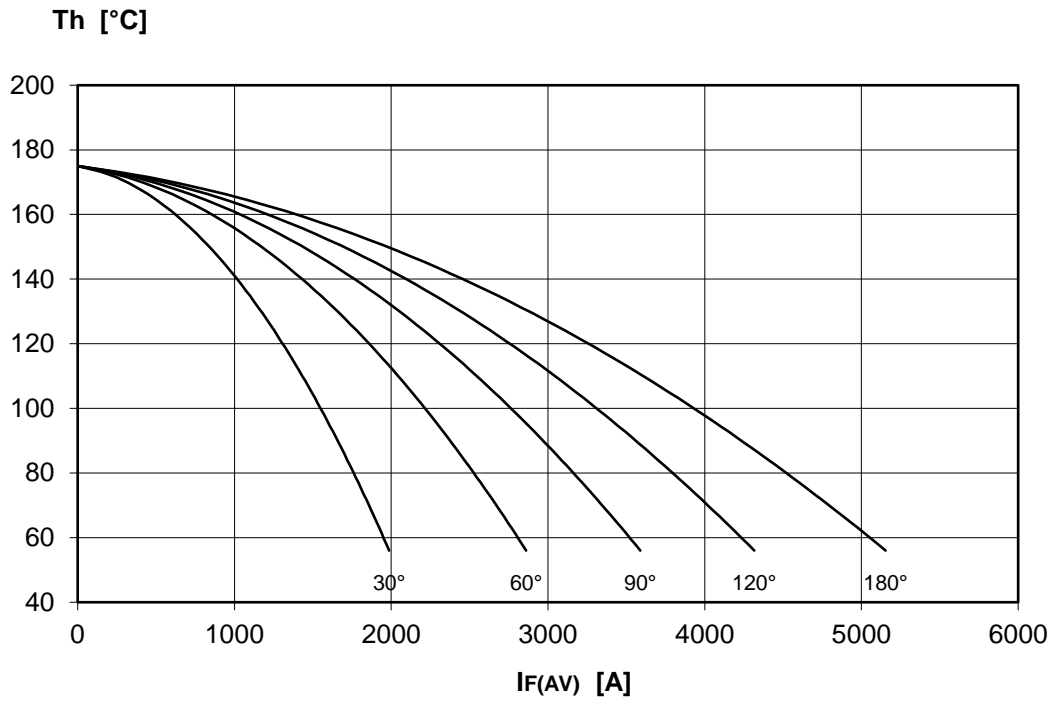
DISSIPATION CHARACTERISTICS

SQUARE WAVE



DISSIPATION CHARACTERISTICS

SINE WAVE

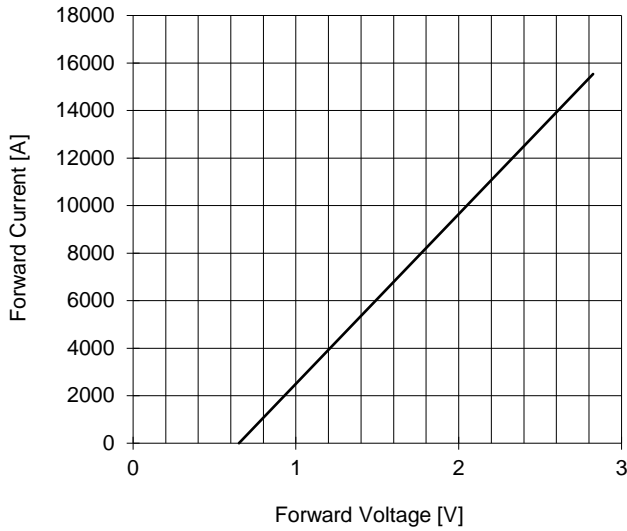


AR749LT RECTIFIER DIODE

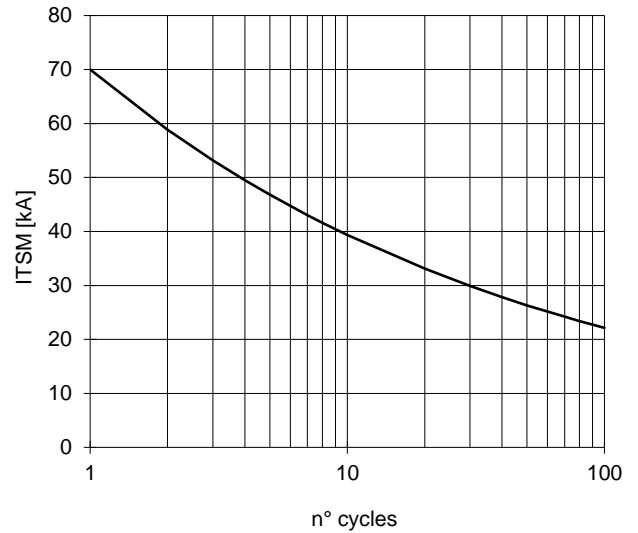


FINAL SPECIFICATION Mar. 17 - Issue: 3

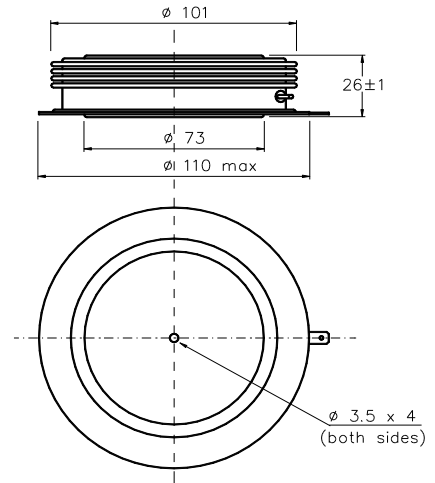
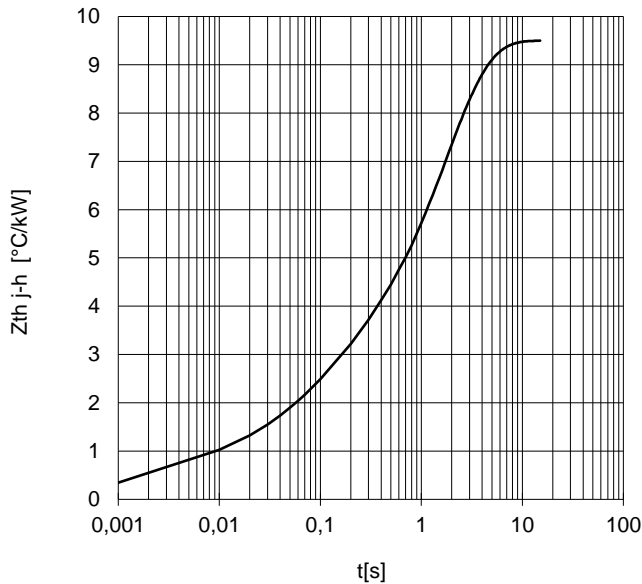
FORWARD CHARACTERISTIC
T_J = 175 °C



SURGE CHARACTERISTIC
T_J = 175 °C



TRANSIENT THERMAL IMPEDANCE
DOUBLE SIDE COOLED



Dimensions
in mm



All the characteristics given in this data sheet are guaranteed only with uniform clamping force, cleaned and lubricated heatsink, surfaces with flatness < .03 mm and roughness < 2 μm.

In the interest of product improvement POSEICO SpA reserves the right to change any data given in this data sheet at any time without previous notice.

If not stated otherwise the maximum value of ratings (symbols over shaded background) and characteristics is reported.

Distributed by

